

LED 高天井灯 HKR-G029 (C1)



IP65 防水



AC100-277V,50/60HZ



取り付け便利



190lm/W

使用温度: -40°C ~ +50°C

保存温度: -40°C ~ +80°C

オプション

電源	色温度	照射角度
INVENTRONICS	3000K	60°
	4000K	90°
	5000K	120°
	5700K	

使用範囲

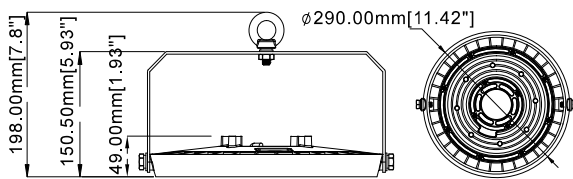
倉庫、工場、展示会、体育館、室内、室外など



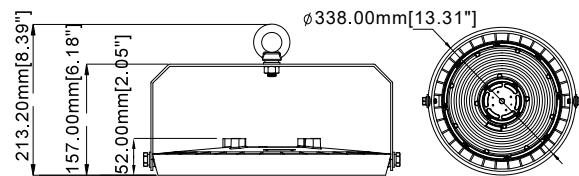
仕様

品番	消費電力	発光効率	LEDチップ	CRI	重量	照射角度
HKR-G029-100W (C1)	100W	190lm/W	SMD 2835	>70		60°/90°/120°
HKR-G029-200W (C1)	200W	190lm/W	SMD 2835	>70		60°/90°/120°

サイズ (mm)



80W/100W/150W



200W



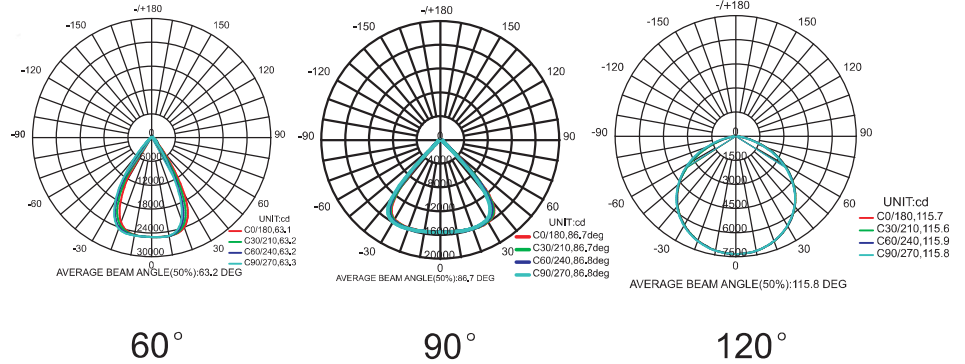
HKR-G029 (C1) シリーズ

LED 高天井灯

モデルオプション

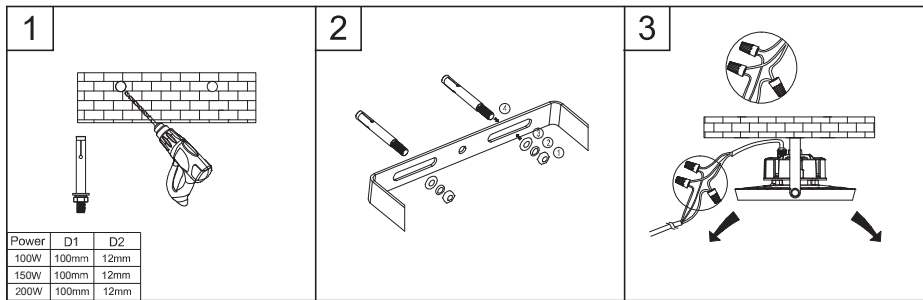


配光図



取付方法

ブラケット A



Safety & EMC Compliance (Continued)

Safety Category	Standard
UKCA	BS EN 61347-1, BS EN 61347-2-13
CB	IEC 61347-1, IEC 61347-2-13
CCC	GB 19510.1, GB 19510.14
PSE	J 61347-1, J 61347-2-13
KS	KS C 7655
EAC	ГОСТ Р МЭК 61347-1, ГОСТ IEC 61347-2-13
EMI Standards	Notes
EN 55015/GB 17743/KN 15 ⁽¹⁾	Conducted emission Test & Radiated emission Test
EN 61000-3-2/GB 17625.1	Harmonic current emissions
EN 61000-3-3	Voltage fluctuations & flicker
FCC Part 15 ⁽¹⁾	ANSI C63.4 Class B This device complies with Part 15 of the FCC Rules. Operation is subject to the following two conditions: [1] this device may not cause harmful interference, and [2] this device must accept any interference received, including interference that may cause undesired operation.
EMS Standards	Notes
EN 61000-4-2	Electrostatic Discharge (ESD): 8 kV air discharge, 4 kV contact discharge
EN 61000-4-3	Radio-Frequency Electromagnetic Field Susceptibility Test-RS
EN 61000-4-4	Electrical Fast Transient / Burst-EFT
EN 61000-4-5	Surge Immunity Test: AC Power Line: Differential Mode 6 kV, Common Mode 10 kV
EN 61000-4-6	Conducted Radio Frequency Disturbances Test-CS
EN 61000-4-8	Power Frequency Magnetic Field Test
EN 61000-4-11	Voltage Dips
EN 61547	Electromagnetic Immunity Requirements Applies To Lighting Equipment

Note: (1) This LED driver meets the EMI specifications above, but EMI performance of a luminaire that contains it depends also on the other devices connected to the driver and on the fixture itself.

電源 : INVENTRONICS



Protection Functions

Parameter	Min.	Typ.	Max.	Notes	
Over Voltage Protection	Limits output voltage at no load and in case the normal voltage limit fails.				
Short Circuit Protection	Auto Recovery. No damage will occur when any output is short circuited. The output shall return to normal when the fault condition is removed.				
Over Temperature Protection	Decreases output current, returning to normal after over temperature is removed.				
Input Under Voltage Protection (IUVP)	Input Under Voltage Protection	70 Vac	80 Vac	90 Vac	Turn off the output when the input voltage falls below protection voltage.
	Input Under Voltage Recovery	75 Vac	85 Vac	95 Vac	Auto Recovery. The driver will restart when the input voltage exceeds recovery voltage.
Input Over Voltage Protection (IOVP)	Input Over Voltage Protection	310 Vac	320 Vac	330 Vac	Turn off the output when the input voltage exceeds protection voltage.
	Input Over Voltage Recovery	300 Vac	310 Vac	320 Vac	Auto Recovery. The driver will restart when the input voltage falls below recovery voltage.
	Max. of Input Over Voltage	-	-	350 Vac	The driver can survive stabilized input over voltage conditions up to 350Vac for a total of 8 hours.

梱包仕様

品番	箱			箱		
	包装サイズ	重量	台/箱	包装サイズ	重量	台/箱
HKR-G029-100W	L365*W365*H255	4.00kg	1	/	/	/
HKR-G029-200W	L415*W415*H270	5.63kg	1	/	/	/